

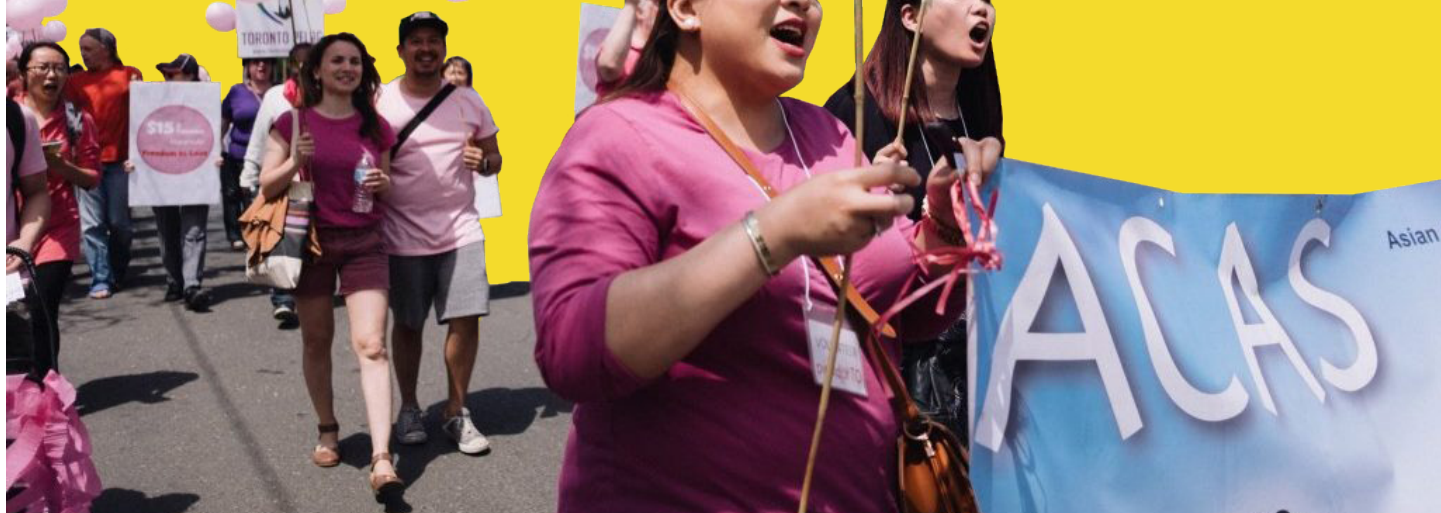
# **Customized Evaluation Supports (CES): Ontario Program Profiles 2015 – 2017**

# Asian Community AIDS Services (ACAS) Queer Asian Youth

CENTRAL HUB // GREATER TORONTO AREA

CUSTOMIZED EVALUATION

SUPPORTS (CES) PROFILES



## ORGANIZATION NAME

Asian Community AIDS Services (ACAS)

## PROGRAM NAME

Queer Asian Youth

## STEPPING UP THEMES

- Health & Wellness
- Strong, Supportive Friends & Family
- Diversity, Social Inclusion & Safety

## PROGRAM TARGET POPULATION

- LGBTTQ Youth
- Racialized Youth

## PROGRAM ACTIVITIES

- Facilitate youth driven workshops on sexual health, healthy relationship, social determinants of health, and anti-oppression;
- Provide capacity development training for youths to become peer educators to facilitate workshop or conduct outreach;
- Organize social events for gay, lesbian, bisexual, transsexual, transgender, queer, curious, undecided, or questioning East & Southeast Asian youths;
- Develop multilingual brochures and resources on HIV prevention, testing, coming out, and other issues related to healthy sexuality

**ACAS** is committed to provided HIV/AIDS education, prevention, and support services to the East and Southeast Asian Canadian Communities. Their programs are based on a pro-active and holistic approach to HIV/AIDS and are provided in a collaborative, empowering, and non-discriminatory manner.

## PROGRAM OVERVIEW

The Queer Asian Youth Program strives to prevent the spread of HIV/AIDS and Sexually Transmitted Infections (STIs) by providing culturally and linguistically appropriate education and outreach to East and Southeast Asian youths, including lesbian, gay, bisexual, transsexual, transgender, queer, questioning (LGBTTQQ), curious or undecided youth, across Toronto.

## WHAT ARE YOUR EVALUATION HOPES AND DREAMS?

“We hope to do a comprehensive evaluation that captures our work until now, and let the results guides us in our future programming”

## WHAT OPPORTUNITIES FOR A SUCCESSFUL EVALUATION?

“We are constantly connecting and engaging the youth in our community, and broadening our community outreach network”

## WHAT KIND OF SUPPORT COULD YOU USE FOR THE EVALUATION?

“Youth are heavily involved in the planning, organization and execution of all of our workshop and social events. We make sure to improve our future events by having focus groups, oral and written evaluations”

## CONNECT WITH QAY!

[acas.org/cause/youth-program/](https://acas.org/cause/youth-program/)  
[@ACAStoronto](https://twitter.com/ACAStoronto)

# BETTER BEGINNINGS BETTER FUTURES

NORTHEAST HUB

CUSTOMIZED EVALUATION

SUPPORTS (CES) PROFILES



## ORGANIZATION NAME

Better Beginnings Better Futures

## PROGRAM NAME

Baby's Breath - a pregnancy and parenting program for teens

## STEPPING UP THEMES

- Strong, Supportive Friends & Families
- Health & Wellness
- Diversity, Social Inclusion & Safety

## PROGRAM TARGET POPULATION

- Pregnant and parenting teen parents who are 18 years of age and under
- Participants can stay in the program until they are 21 years old

## PROGRAM ACTIVITIES

- Prenatal education
- Parenting education
- Child growth and development education
- Emotional support through social support counselling
- Referral to family physicians and OB/GYN
- Personal supports such as court, labour, breastfeeding, housing, childcare, and nutrition

**BETTER BEGINNINGS BETTER FUTURES** is a not-for-profit located in Flour Mill area of Sudbury, Ontario. It provides a multitude of services that assist individuals living in the area from infancy into adulthood free of cost.



## PROGRAM OVERVIEW

The Baby's Breath Program is designed to meet the needs of pregnant teens 18 years of age and under. It is based on the understanding that teen mothers and fathers need a place where they can meet other teen parents to share their experiences and prepare for the realities and responsibilities of becoming a parent. They want to learn about prenatal care and parenting education in a positive and friendly learning environment.



## WHAT ARE YOUR EVALUATION HOPES AND DREAMS?

"Our goal is to create an evaluation that will provide evidence that the Baby's Breath program is positively impacting the lives of participants. With this evaluation data we will be able to strengthen our funding proposals therefore increasing the likelihood of sustaining our program. We will have a better "pulse" on this the needs of our program participants and possibly be able to identify trends."



## WHAT ARE OPPORTUNITIES FOR A SUCCESSFUL EVALUATION?

The Baby's Breath Program has a long track record of working with teen parents to strengthen their ability to respond effectively to their needs and that of their children. By developing a logic model and evaluating our processes and outcomes we will be able to see if we're reaching our goals, or what steps we need to take in order to improve our work with pregnant and parenting youth.



## HOW WILL YOUTH BE INVOLVED IN THE EVALUATION?

Youth will support our focus groups, participate in meetings with the YouthREX team and provide feedback on the evaluation process.

## CONNECT WITH BABY'S BREATH PROGRAM!

[www.betterbeginningsudbury.ca](http://www.betterbeginningsudbury.ca) // [@BBBFSudbury](https://www.instagram.com/BBBFSudbury)



"Being a young mom means that we met a little early, but it also means I get to love you a little longer. Some people said that my life ended when I had a baby, but my life had just begun. You didn't take me away from my future, you gave me a new one."

-Author unknown



# Big Brothers Big Sisters of Peel

CENTRAL HUB  
GREATER TORONTO AREA

CUSTOMIZED EVALUATION

SUPPORTS (CES) PROFILES



## ORGANIZATION NAME

Big Brothers Big Sisters of Peel

## PROGRAM NAME

Big Brothers Big Sisters Mentoring

## STEPPING UP THEMES

- Strong, Supportive Friends & Families
- Civic Engagement & Youth Leadership

## PROGRAM TARGET POPULATION

- Youth living in poverty

## PROGRAM ACTIVITIES

- Recruiting and training adult mentors
- Matching children and youth with adult mentors
- Monitoring and supporting mentor-mentee relationships

**“Having a Big Sister has allowed me to learn new things, I feel more positive and I finally have a great friend.”**

– JESS, LITTLE SISTER



**CONNECT WITH  
BIG BROTHERS, BIG SISTERS OF PEEL!**

[www.bbbspeel.com](http://www.bbbspeel.com) // [@bbbsofpeel](https://www.instagram.com/bbbsofpeel)

For more than 100 years, **BIG BROTHERS BIG SISTERS OF PEEL** has been making a positive difference in the lives of youth through a wide range of mentoring programs. The organization believes every child should have the opportunity to reach his or her full potential, both as individuals and citizens – that by doing so, they will not only do well, they will also do good. Big Brothers, Big Sisters’ vision is that children and youth will realize their full potential through the power of mentoring.

## PROGRAM OVERVIEW

The program matches children and youth ages 6 – 17 with a caring adult mentor who is 18 or older. Through regular outings, a relationship is developed between the mentor and the mentee that is built on trust and common interests, and is supported by experienced caseworkers.

## WHAT ARE YOUR EVALUATION HOPES AND DREAMS?

“We want to change, we want to engage our staff more in the evaluation process and in the data collection and we want to have our evaluation of our Big Brother Big Sister program be shorter, more concise. We want it to be more user friendly. We want to focus on the youth voice, all those things that we haven’t been able to tackle on our own because it’s just seems overwhelming to figure out how to do it.”

## HOW MIGHT THIS BE AN OPPORTUNITY FOR SUCCESSFUL EVALUATION?

“I really believe in the quality of our program and so it makes this whole process much easier for me. I think that I see it as a learning opportunity; that makes it easier. It’s not that our program isn’t working, it’s a learning opportunity. It’s a chance to learn what is working well and to be able to make sure that we do that even better.”

## HOW WILL YOUTH BE INVOLVED IN YOUR EVALUATION?

“Actually having youth voice on what are the outcomes—and what could a survey look like or what could the evaluation plan look like?”

# Canadian Mental Health Association (CMHA), Ontario Division

CUSTOMIZED EVALUATION

SUPPORTS (CES) PROFILES

CENTRAL HUB // GREATER TORONTO AREA



## ORGANIZATION NAME

Canadian Mental Health Association, Ontario Division

## PROGRAM NAME

Mood Walks for Youth in Transition

## STEPPING UP THEMES

- Health & Wellness
- Diversity, Social Inclusion & Safety

## PROGRAM TARGET POPULATION

- All Youth (Specifically, youth who are at risk of, or are experiencing, mental health issues)

## PROGRAM ACTIVITIES

- Support community organizations as they launch sustainable Mood Walk groups
- Connect participating agencies with local volunteers, community partners, and resources
- Provide training opportunities in hiking skills, youth engagement, and evaluation
- Create knowledge exchange opportunities and events

**“The Mood Walks group has helped me to feel healthier, more energetic and more at peace with myself. I feel less angry, less stressed and more relaxed after the hikes.”**

– YOUTH PARTICIPANT



## CONNECT WITH MOODWALKS FOR YOUTH IN TRANSITION!

[www.moodwalks.ca](http://www.moodwalks.ca) // [@moodwalksON](https://twitter.com/moodwalksON)

**CANADIAN MENTAL HEALTH ASSOCIATION (CMHA)**, Ontario Division is a non-profit, charitable organization committed to making mental health possible for all.

CMHA Ontario is a dedicated partner within the network of Canadian Mental Health Associations at the national, provincial and local level. CMHA Ontario works closely with its 31 local branches in communities across the province to ensure the utilization of best practices in the organization, management and delivery of services to consumers and families of individuals with mental illness, dual diagnosis and concurrent disorders.



## PROGRAM OVERVIEW

Mood Walks for Youth in Transition is a provincial initiative in partnership with Hike Ontario and Conservation Ontario, with funding from the Ontario Ministry of Tourism and Sport. Mood Walks is currently providing training and support to 41 community mental health organizations across Ontario to launch educational walking programs for youth who are at risk of, or are experiencing, mental health issues.



## WHAT ARE YOUR EVALUATION HOPES AND DREAMS?

“We want both the evaluation process as well as the outcomes to be meaningful to the participating youth, program leaders, and organizations. By allowing for customization and flexibility in the tools being used, we hope to build long-term evaluation capacity within each individual Mood Walks group.”



## HOW MIGHT THIS BE AN OPPORTUNITY FOR SUCCESSFUL EVALUATION?

“Program leaders attended a leadership retreat that focused on skill building, evaluation planning and youth engagement strategies prior to starting their Mood Walks groups. In addition to being provided a comprehensive program manual that includes evaluation tools, program leaders collaboratively support one another through the evaluation and planning process by sharing additional tools and resources.”



## HOW WILL YOUTH BE INVOLVED IN YOUR EVALUATION?

“We encourage participating agencies to engage youth at the very beginning, in planning their program and deciding what outcomes to measure. We would like to see clients engaged throughout the process, with opportunities to share what might be important for them to measure. Asking the question, What would success look like for you if you joined this hiking group?”

# Charlie's FreeWheels

CENTRAL HUB // GREATER TORONTO AREA

CUSTOMIZED EVALUATION  
SUPPORTS (CES) PROFILES



## ORGANIZATION NAME

Charlie's FreeWheels

## PROGRAM NAME

Build-a-Bike Program

## STEPPING UP THEMES

- Health & Wellness
- Strong, Supportive Friends & Families
- Education, Training & Apprenticeships

## PROGRAM TARGET POPULATION

- Racialized youth
- Newcomer youth
- Youth in conflict with the law
- Youth living in poverty

## PROGRAM ACTIVITIES

- Building community relationships to recruit youth
- Providing bike-building courses

**"My bike will be a motivation in life due to the hard work I put in"**

— PAST PARTICIPANT



## CONNECT WITH CHARLIE'S FREEWHEELS!

[www.charliesfreewheels.ca](http://www.charliesfreewheels.ca) // @charliesfw

**CHARLIE'S FREEWHEELS** is a not for profit organization that aims to inspire a spirit of exploration and to mobilize, empower and engage youth using bicycles as a driver for personal growth and positive social change.

## PROGRAM OVERVIEW

The Build-a-Bike program teaches bicycle mechanics to youth from Regent Park, Moss Park and St. James Town. The program is free for participants, and gives youth the opportunity to build their own bike by refurbishing a used one. At the end of the program, participants get a new bike, accessories and the necessary skills to safely ride and maintain their bikes.

## WHAT ARE YOUR EVALUATION HOPES AND DREAMS?

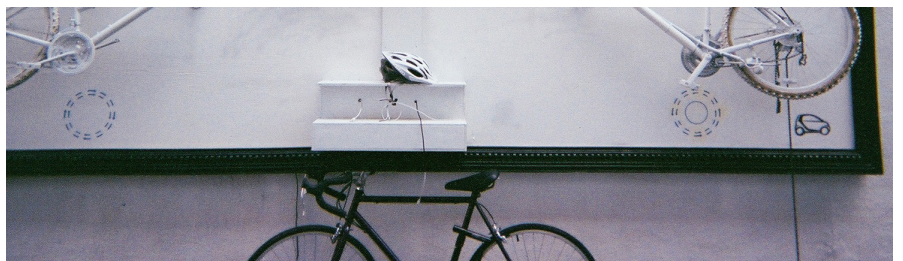
"I feel like often times they're (the youth) just like "its awesome" (the program)... for me, I'm most interested in those students who came to one class and didn't continue, so how to assess their experience. What were the issues of the program? ...To get honest responses."

## HOW MIGHT THIS EVALUATION BE USEFUL TO OTHER AGENCIES?

"We work a lot with Pathways to Education and students, so we want to be accountable for them to say this is how many students volunteered, this was their experience, this is what they gained."

## WHAT KIND OF SUPPORT COULD YOU USE FOR THE EVALUATION?

"...we try to teach in a way that supports youth directed and discovery-based learning so young people really are the ones that are supposed to be the ones driving their own learning process...So one of the indicators of successful programming would be how many questions they are asking and coming up with their own hypotheses."



# Community Academic Reciprocal Engagement (CARE)

CUSTOMIZED EVALUATION  
SUPPORTS (CES) PROFILES



## ORGANIZATION NAME

Community Academic Reciprocal Engagement (CARE)

## PROGRAM NAME

CARE Afterschool Program

## STEPPING UP THEMES

- Health & Wellness
- Education, Training & Apprenticeships
- Diversity, Social Inclusion & Safety

## PROGRAM TARGET POPULATION

- Racialized youth
- Newcomer youth

## PROGRAM ACTIVITIES

- Recruiting Black girls and university students
- Facilitating a weekly after-school program
- Developing an end of project exhibit of works produced

**“The goal was to demystify post-secondary education, increase possibilities, and inspire hopes and dreams for these girls who have just been ignored by society.”**

- FUNKE OBA, FOUNDER

**The CARE (Community Academic Reciprocal Engagement) program seeks to inspire Black middle-school girls and promote reflexivity among social work students.**

## PROGRAM OVERVIEW

The program engages graduate social work and allied students from Wilfrid Laurier and Black girls in grades 6-8 in an intervention that promotes benefits for both groups through an arts-based after school program. The after school program focuses on the creation of arts projects that have a social justice aim.

## WHAT ARE YOUR EVALUATION HOPES AND DREAMS?

“We’re hoping to show the impact from the project, learn some insights from it, and long-term we want to develop a community toolkit that gives the social workers and healthcare professionals some reflective pieces about what are the best practices and ways to evaluate how equipped they are to work with racialized youth.”

## WHAT ARE THE OPPORTUNITIES FOR A SUCCESSFUL EVALUATION?

“Canada is taking in an unprecedented number of refugees right now, but how equipped are we to create an environment that helps them thrive, that will enhance their prospects of civic participation? We need to look to the racialized youth who are already here in order to learn how we can really integrate the new refugees. Our evaluation will help us do that learning.”

## WHAT KIND OF SUPPORT COULD YOU USE FOR THE EVALUATION?

“We want it to be art-based but we are open to other forms of evaluation if people want to write scholarly articles and things like that. Because I want the youth to be involved, and in art space everyone can do the evaluation.”

## CONNECT WITH CARE!

[@CARE4BlackGirls](#)

# Currant Systems

CENTRAL HUB // GREATER TORONTO AREA

CUSTOMIZED EVALUATION  
SUPPORTS (CES) PROFILES



## ORGANIZATION NAME

Currant Systems

## PROGRAM NAME

Currant Cooperative

## STEPPING UP THEMES

- Employment & Entrepreneurship
- Civic Engagement & Youth Leadership

## PROGRAM TARGET POPULATION

Youth living in poverty  
Racialized Youth  
Newcomer Youth

## PROGRAM ACTIVITIES

- Connecting social entrepreneurs to resources and investors.
- Coaching
- Consulting
- Facilitating
- Program Design

**“...the team at Currant Systems...have taught me how to see myself as a young entrepreneur who is cognizant of my community.”**

– CELEST CERES, COMMUNITY MEMBER



## CONNECT WITH CURRANT SYSTEMS!

[www.currant.systems](http://www.currant.systems) // [@CurrantSociety](https://twitter.com/CurrantSociety)

**CURRANT SYSTEMS** is a non-profit hub of support and opportunity that connects social entrepreneurs with the resources they need to develop their ideas. Young inspired talent is united with like-minded partners, such as local businesses, large institutions, community leaders and advisors, who are all driven to create a sustainable difference in our world.

## 🔍 PROGRAM OVERVIEW

Through their support system, Currant provides equal opportunities for youth to explore social entrepreneurship. They aim to help youth's new ideas to flourish into making a positive impact in their community, and to set a global wave of change in motion.

## 💡 WHAT ARE YOUR EVALUATION HOPES AND DREAMS?

To gain a practical approach on how we can evaluate things such as a sense of belonging and ownership in the community, as well as measuring the meaningfulness of engagement. Our goal is to better understand how young people utilize their lived experience to execute projects and ideas.

## 🚀 WHAT ARE OPPORTUNITIES FOR SUCCESSFUL EVALUATION?

The organization has not been incorporated since 2014-2016, the executive director has moved into a position with the government and is looking to hand it over to a youth led team. Given the transition, we are at a capacity building stage. We recognize that our programs are making a significant impact, however we want to further develop our evaluation.

## ⊕ HOW IS YOUTH LEADERSHIP IMPORTANT TO THE EVALUATION?

Young people are at the helms of various initiatives and this evaluation will provide them with evidence that further strengthens their innovations and projects. Youth evaluation not only builds strong leadership but it allows them to gain a deeper understanding of the various roles involved in entrepreneurship.



# Dr. Jay Children's Grief Centre

CENTRAL HUB // GREATER TORONTO AREA

CUSTOMIZED EVALUATION  
SUPPORTS (CES) PROFILES



## ORGANIZATION NAME

Dr. Jay Children's Grief Centre

## PROGRAM NAME

Family Night & Youth Support Group

## STEPPING UP THEMES

- Diversity, Social Inclusion & Safety
- Strong, Supportive Friends & Families
- Health & Wellness

## PROGRAM TARGET POPULATION

Children, youth and families living with the dying and death of a family member

## PROGRAM ACTIVITIES

- Individual and family counselling incorporating psychoeducation, therapeutic art, music, drama, physical activities, and psychotherapy
- Facilitating a Youth Group and Leaders in Training (LIT) program
- Hosting family events, which include therapeutic activities aimed at remembering the person who died, emotional expression, supporting communication and community building
- Camp Erin, a weekend bereavement camp for bereaved children and youth
- Education, training and consultation for professionals involved in caring for children and youth

**"My life felt over at that point. My health took a steep downturn and I didn't know what to do to save it. That was when I started going for grief counselling and it very well saved my life."**

- ROBERT M., A BEREAVED SON

## CONNECT WITH

### DR. JAY CHILDREN'S GRIEF CENTRE!

[www.drjaychildrensgriefcentre.ca](http://www.drjaychildrensgriefcentre.ca)

@drjaycentre

The mission of **DR. JAY CHILDREN'S GRIEF CENTRE** is to provide care, support and education to grieving children, youth and their families around death and dying, while building strength, resilience and hope.

## PROGRAM OVERVIEW

Dr. Jay Children's Grief Centre offers a range of services, including: counselling for children, youth and families before and after the death of a family member; group support for bereaved youth; monthly events for bereaved families, and a weekend bereavement camp for bereaved children and youth. These programs aim to support and strengthen children, youth and families' capacities to care for themselves and one another as they grieve; to be included and supported to understand their experiences of illness, death and grief; and to have opportunities to connect, share their experiences and support with others, including a community of grieving peers.

## WHAT ARE YOUR EVALUATION HOPES AND DREAMS?

"We have piloted an outcome evaluation with a modified version of a 'Parenting Concerns Questionnaire' developed and validated by a team at the Dana-Farber, and Massachusetts General Hospital Cancer Centers in Boston. We would be grateful for support in implementing this assessment tool more broadly, as well as developing a parallel assessment based on children and youth's perspectives, and guidance with regards to data management." We also hope to compile results of various, program-specific evaluations into a comprehensive, clear and compelling report, highlighting the unique elements and common threads and strengths of our services."

## WHAT ARE OPPORTUNITIES FOR SUCCESSFUL EVALUATION?

As a relatively young organization supporting grieving families since 2006, we have been collecting participant feedback and outcome data since 2008. Last year we became our own free-standing charitable organization, needing to better understand our impacts and the needs of our clients. However, as a small and mighty team we did not have the resources to conduct a comprehensive program evaluation including all of our historic data, without YouthRex's support.

## HOW IS YOUTH LEADERSHIP IMPORTANT TO THE EVALUATION?

Young people are at the helms of various initiatives and this evaluation will provide them with evidence that further strengthens their innovations and projects. Youth evaluation not only builds strong leadership but it allows them to gain a deeper understanding of the various roles involved in entrepreneurship.

# Egale Canada Human Rights Trust

CUSTOMIZED EVALUATION

SUPPORTS (CES) PROFILES

CENTRAL HUB // GREATER TORONTO AREA



## ORGANIZATION NAME

Egale Canada Human Rights Trust

## PROGRAM NAME

Egale Youth OUTreach Centre

## STEPPING UP THEMES

- Health & Wellness
- Diversity, Social Inclusion & Safety
- Strong, Supportive Friends & Families

## PROGRAM TARGET POPULATION

LGBTQI2S Youth  
Racialized Youth  
Newcomer Youth  
Youth living in Poverty

## PROGRAM ACTIVITIES

- Providing same day, no waitlist counselling and crisis support
- Peer support, assistance to access resources
- Therapeutic and peer-based group support and programs
- Offering drop-in and recreation activities, support with accessing employment, education and job readiness programs
- Supporting LGBTQI2S refugees, asylum seekers and newcomers with immigration and settlement paperwork, filing for status and adjusting to life in Canada

**“Egale’s vision is a Canada, and ultimately a world, without homophobia, biphobia, transphobia and all other forms of oppression so that every person can achieve their full potential, free from hatred and bias.”**

Founded in 1995, **EGALE CANADA HUMAN RIGHTS TRUST** is Canada’s only national charity promoting lesbian, gay, bisexual, and trans (LGBT) human rights through research, education and community engagement.

## PROGRAM OVERVIEW

Egale Youth OUTreach (EYO) is Toronto’s first and only LGBTQI2S focused drop-in counselling centre that provides affirming and supportive counselling, homelessness, suicide and crisis intervention services to LGBTQI2S youth 29 and under.

## WHAT ARE YOUR EVALUATION HOPES AND DREAMS?

“The goal is to measure how we make a difference – are we making a difference that alleviates crisis, and helps develop stability? We want to find out from a participant-perspective if this is happening.”

## WHAT ARE OPPORTUNITIES FOR SUCCESSFUL EVALUATION?

“The biggest opportunity for us right now is in developing concrete program outcomes, and assessing our impact and ability to reach these through short and longer-term program inputs and activities. The opportunity to involve participants throughout the evaluation process would also make this evaluation process highly successful.”

## HOW IS YOUTH LEADERSHIP IMPORTANT TO THE EVALUATION?

“Our youth want to be able to provide feedback, and be involved in the program, but they need to be involved in the safest way possible. A youth advisory committee, for instance, would be a way of people being actively engaged in the evaluation, and learning together. This way the youth are going beyond consultation to active involvement. In future meetings, we hope to invite some of the youth.”

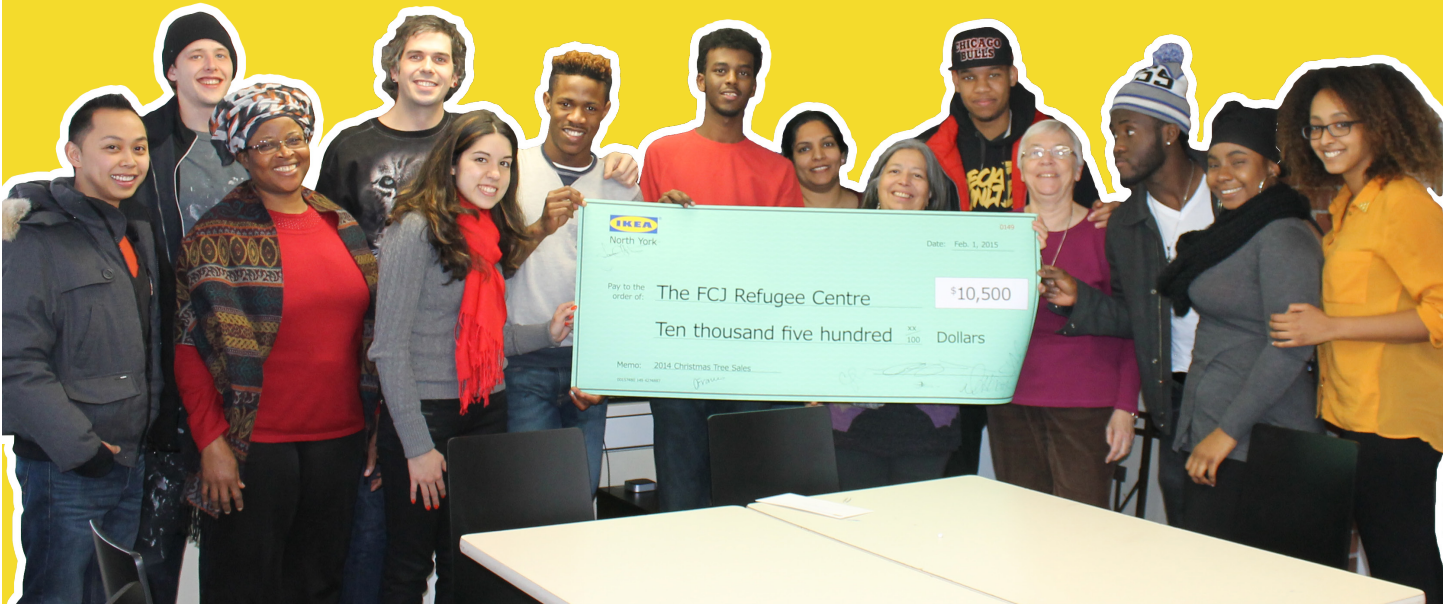
## CONNECT WITH EGALE CANADA HUMAN RIGHTS TRUST!

[www.egale.ca](http://www.egale.ca) // [@EgaleCanada](https://twitter.com/EgaleCanada)

# FCJ Refugee Centre

CENTRAL HUB // GREATER TORONTO AREA

CUSTOMIZED EVALUATION  
SUPPORTS (CES) PROFILES



## ORGANIZATION NAME

FCJ Refugee Centre

## PROGRAM NAME

Uprooted U

## STEPPING UP THEMES

- Education, Training & Apprenticeships
- Civic Engagement & Youth Leadership

## PROGRAM TARGET POPULATION

Racialized Youth  
Newcomer Youth  
Youth living in poverty

## PROGRAM ACTIVITIES

- Provide weekly classes and community lectures
- Pairing students with a mentor in their identified fields of interest
- Assigning students specific assignments to improve their academic skills

**“I never thought that I would ever sit in a class and learn again. But being part of Uprooted U made me feel like I was in school again, sitting in class and learning again; having classmates and lots of homework and essays to write.”**

- FRANCOIS RÉGIS DUSHIMIYIMANA,  
PARTICIPANT



## CONNECT WITH FCJ REFUGEE CENTRE!

[www.fcjrefugeecentre.org](http://www.fcjrefugeecentre.org) // @RefugeeCentre

**FCJ REFUGEE CENTRE** helps up-rooted people overcome the challenges of rebuilding their lives in Canadian society. With an open door approach, the Centre offers an integrated model of refugee protection, settlement services and education, including shelter for women and their children.

## 🔍 PROGRAM OVERVIEW

This educational program is designed specifically to address the current gaps in access to post-secondary education for precarious status youth. This innovative project introduces students to university-level academic standards with respect to critical thinking, reading and writing.

## 💡 WHAT ARE YOUR EVALUATION HOPES AND DREAMS?

This project started two years ago thanks to the generous funding from the Counseling Foundation. Since its initial development we have had several informal evaluations that have helped us to modify and adapt the delivery of the program to better meet the needs and desires of the students. A more formal and final evaluation would really help us as we transition into an institutionalized environment. As no project of this kind has been tried before in Toronto, the evaluation will also help us to inform others who may want to undertake similar initiatives

## 🚀 WHAT ARE OPPORTUNITIES FOR SUCCESSFUL EVALUATION?

The students have been eager so far to share their experiences in the program as they want it to meet specific expectations of higher education. This is a great opportunity as it lets them determine what they want from the classroom experience. While we cannot replicate post-secondary institutions in every way, allowing the students to determine what is most important to them provides exciting opportunities for learning.

## ⊕ HOW IS YOUTH LEADERSHIP IMPORTANT TO THE EVALUATION?

Youth leadership is crucial in all our youth activities. The project developed out of the need youth identified regarding limited access to post-secondary education. Since the youth themselves wanted this project, it is important to us that their voice is heard in every step of the evaluation process.

# For Youth Initiative

CENTRAL HUB // GREATER TORONTO AREA

CUSTOMIZED EVALUATION

SUPPORTS (CES) PROFILES



## ORGANIZATION NAME

For Youth Initiative (FYI)

## PROGRAM NAME

Re-integrating the Socially Excluded (RISE)

## STEPPING UP THEMES

- Diversity, Social Inclusion & Safety

## PROGRAM TARGET POPULATION

- Youth living in poverty  
- Racialized youth  
- Newcomer youth

## PROGRAM ACTIVITIES

### - Academic preparation

Workshops, tutoring, case management, goal setting and credit recovery

### - Employment preparation

Skills development workshops, internship/ job placements, business coaching, career mentoring and career mapping

### - Family support

Parent workshops, meeting with youth's case lead, co-planning with youth, connecting with additional support systems

### - One-on-one mentoring

Mentor recruitment and orientation, pairing of youth with corporate mentors, weekly mentoring, monthly group mentorship sessions, exposure to young professionals, engaging in social activities

## CONNECT WITH RISE

[www.foryouth.ca/rise\\_program](http://www.foryouth.ca/rise_program)

@FYIinTO



## PROGRAM OVERVIEW

RISE is now in its third year providing holistic supports to youth, ages 12 to 17, who are in conflict with the law. The program takes a restorative justice approach while allowing youth to fulfill their extrajudicial sanctions and Community Service Orders. Its programming focuses on four key areas: employment and career, education, family wellbeing, and social engagement.



## WHAT OPPORTUNITIES FOR A SUCCESSFUL EVALUATION?

“There is a wide range of community-based diversion programs but few program evaluations are publically available. This, and other challenges (like lack of access to criminal justice system data), make it difficult to make arguments about the effectiveness of community-based diversion programs. RISE’s evaluation will inform internal program development as well contribute to the sector’s understanding of designing and delivering community-based diversion programs for youth involved with the justice system.”



## WHERE WE'RE AT IN OUR EVALUATION

RISE has completed a logic model, evaluation plan, and a process evaluation that has produced preliminary findings:

- 1) What's working: It was found that zero RISE participants have missed court dates.
- 2) Opportunities: The Monthly Mentoring sessions should work to be more engaging and incorporate opportunities for building group cohesion.
- 3) Opportunities: RISE's staff is working in collaboration with YouthREX to improve its data management protocols in order to make evaluation more efficient.



## WHERE WE'RE AT IN OUR EVALUATION

RISE program participants who are newcomer youth require additional supports related to integration. RISE designed their program to support the specific and unique needs of newcomer youth and their families who are involved with the justice system. Moreover, in order to better understand the needs of newcomer youth involved with the law, FYI has started a newcomer youth-led participatory action research project called “Rising Researchers.” Rising Researchers seeks to understand the systemic barriers that propel newcomer youth into gangs and criminal activities.

# LONDON YOUTH ADVISORY COUNCIL (LYAC)

CUSTOMIZED EVALUATION  
SUPPORTS (CES) PROFILES

SOUTHWESTERN HUB



## ORGANIZATION NAME

London Youth Advisory Council (LYAC)

## PROGRAM NAME

Youth Council Project

## STEPPING UP THEMES

- Civic Engagement & Youth Leadership
- Coordinated & Youth-Friendly Communities
- Education, Training & Apprenticeships

## PROGRAM TARGET POPULATION

- All Youth

## PROGRAM ACTIVITIES

- Youth outreach
- Council elections
- Weekly working meetings
- Community events
- Advocacy

**“Communities are stronger when young people are included in public policy processes.”**



## CONNECT WITH LONDON YOUTH ADVISORY COUNCIL (LYAC)!

[www.lyac.ca](http://www.lyac.ca) // [@LondonYAC](https://twitter.com/LondonYAC)

**LONDON YOUTH ADVISORY COUNCIL (LYAC)**, exists to ensure that youth voices are integrated into local public policy decisions. LYAC seeks to reboot citizenship in London by encouraging youth to lead the charge against political apathy by playing a constructive role in the decision-making processes of the governments and institutions that influence their communities.



### PROGRAM OVERVIEW

The Youth Council is composed of 15 Youth Ward Councillors, aged 15-25. Elected Youth Councillors meet in roundtable format to discuss and analyze a spectrum of issues relevant to youth to ensure youth voice is taken seriously by politicians and decision-makers.



### WHAT ARE YOUR EVALUATION HOPES AND DREAMS?

“We’d like to be able to explore different metrics and measures so we can better understand what we should be measuring, and through this process try to propose new measures that the city and governments should be also be tracking in order to better engage with young people.”



### WHAT ARE OPPORTUNITIES FOR SUCCESSFUL EVALUATION?

“We’re in a position where we have our first full time Executive Director, and we now have a Board composed entirely of young people, which means that we are youth governed and youth led. All of this is very exciting, and it’s a great opportunity to make sure we’re fully understanding our impact and can make sure we’re deepening it in the most effective ways.”



### HOW WILL YOUTH BE INVOLVED IN THE EVALUATION?

“Youth are involved in providing feedback through the evaluation process, and we in turn feed what we learn back to the youth in our program.”



# Next Gen Men Afterschool Program

CENTRAL HUB // GREATER TORONTO AREA

CUSTOMIZED EVALUATION

SUPPORTS (CES) PROFILES



## ORGANIZATION NAME

Next Gen Men

## PROGRAM NAME

Next Gen Men's Afterschool Program

## STEPPING UP THEMES

- Health & Wellness
- Strong, Supportive Friends & Families
- Diversity, Social Inclusion & Safety

## PROGRAM TARGET POPULATION

- Newcomer youth
- Racialized youth
- Youth living in poverty
- All youth
- Specifically: Male-identified youth aged 12-14 years

## PROGRAM ACTIVITIES

- 10-week After-School Program
- Field Trip

**"Next Gen Men is a place where I can  
come and be myself after school"**

- ASHTON MEADOWS  
PARTICIPANT, 2015

## CONNECT WITH NEXT GEN MEN!

<http://nextgenmen.ca> // @nextgenmen

**NEXT GEN MEN** is a youth-led, nonprofit organization focused on building better men through youth and peer education, engagement, and empowerment. Since 2015, they've been creating space for young men to explore gender, masculinity, and health in their after-school programs, workshops, and presentations throughout the Greater Toronto Area



## PROGRAM OVERVIEW

Next Gen Men's After-school program runs for 10 weeks with a group of up to 15 male-identified students in grades 7 & 8 at each of our schools. They facilitate activities, games, and discussions around our program pillars of self (acceptance, esteem, love, and awareness), health (mental, emotional, and physical), and others (inclusiveness, diversity, empathy, and relationships). The goals and objectives of our program include: exploring concepts of masculinity and positive, healthy ways to be a man, challenging gender roles and stereotypes, developing leadership skills, self-confidence, and self-awareness, celebrating diversity and learning from others different from ourselves, building skills for mental health prevention and promotion, developing connection and support among peers, practicing empathy and increasing emotional intelligence, and exploring what a healthy relationship looks like, how to practice consent, and how to be a good friend.



## WHAT ARE YOUR EVALUATION HOPES AND DREAMS?

Our evaluation hopes and dreams are two-fold. First, we want to be able to share the stories and experiences of how our participants are learning and growing through our program with our stakeholders (by stakeholders, we mean everyone from parents, teachers and school admins, to our funders and community partners). Second, and maybe more importantly, we want to be able to observe, document, and learn from what we are doing, so that can continue to improve our programming and increase our impact.



## WHAT OPPORTUNITIES FOR A SUCCESSFUL EVALUATION?

Our team is really committed to evaluation and ongoing learning, and because we are a small, youth-led team, we have a lot of flexibility to adjust and adapt our evaluation methods and our actual programming based on what we learn. We hope this will help to ensure that our approach to evaluation is successful and sustainable for our organization!



## WHAT KIND OF SUPPORT COULD YOU USE FOR THE EVALUATION?

We need to put structures and resources in place to engage youth in evaluation. This will be a challenge because of our limited capacity in terms of human resources and time! We can create meaningful opportunities for our participants to provide their feedback on their experiences in our after-school program through the follow-up questionnaire, and the informal focus group discussions at the end of program.

# THE OSGOODE YOUTH ASSOCIATION (O-YA)

CUSTOMIZED EVALUATION

SUPPORTS (CES) PROFILES

EASTERN HUB



## ORGANIZATION NAME

The Osgoode Youth Association

## PROGRAM NAME

Teen Leadership Camp

## STEPPING UP THEMES

- Civic Engagement & Youth Leadership
- Coordinated & Youth-Friendly Communities
- Diversity, Social Inclusion, and Safety
- Health and Wellness
- Education, Training, and Apprenticeship

## PROGRAM TARGET POPULATION

- Youth living in rural and remote communities

## PROGRAM ACTIVITIES

- One Week Leadership Camp in the summer that includes: Community Based Challenges (City Councillor Challenge, Business Challenge, 150 & Me Challenge); Leadership training and development activities; Social recreation and peer mentoring activities

**“One big thing that we instill in our Leadership Camp is perseverance. We intentionally present youth with challenges, and then teach them how to either get over those challenges or fail and try again. The important thing is not to give up.”**



## CONNECT WITH O-YA!

[www.o-ya.ca](http://www.o-ya.ca) // [@oyacentre](https://www.instagram.com/oyacentre)

**THE OSGOODE YOUTH ASSOCIATION (O-YA)**, is a community built and operated non-profit youth centre. O-YA’s programs increase opportunities for children and youth to be engaged in the critical hours outside of school - a goal which is particularly important for youth living in a rural community without public transportation or local middle / high schools.



## PROGRAM OVERVIEW

O-YA’s Leadership Camp focuses on teaching the fundamentals of team building and leadership by developing problem-solving skills and gaining self-confidence in a challenging and positive environment. Participants will learn life long skills all in this intensive, yet fun, learning environment.



## WHAT ARE YOUR EVALUATION HOPES AND DREAMS?

“Our intention for evaluating O-YA’s Teen Leadership Camp is to ensure that we’re meeting the program outcomes as laid out in our Logic Model. We also want to make sure that the participants are getting all of the program benefits that we intended. Additionally, O-YA would like to grow our Leadership Camp from a one week program during the summer to a year long program that reaches more youth participants. O-YA will use evaluation results to continually improve our program inputs, outputs and outcomes.”



## IS THERE ANYTHING ABOUT THE CONTEXT THAT WOULD BE IMPORTANT FOR EVALUATION?

“I think the rural component is probably the biggest key. Also important is the fact that this isn’t really our only touch piece with these kids. For some of them it will be the first and only time that we ever meet them, but for most of them, we’ve seen them here before and we will see them here again.”



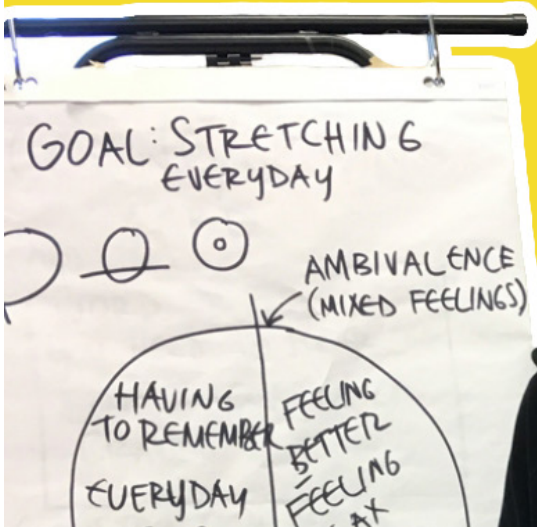
## HOW WILL YOUTH BE INVOLVED IN THE EVALUATION?

“O-YA was excited to work with YouthREX in 2016 on our Leadership Camp evaluation. The YouthREX team was instrumental in bringing together youth who were in both the 2015 and 2016 Leadership Camps to help us develop our Logic Model and the format for evaluation. We’re excited to share evaluation results with that team of youth so they can help us improve the program.”

# Pieces to Pathways

CENTRAL HUB // GREATER TORONTO AREA

CUSTOMIZED EVALUATION  
SUPPORTS (CES) PROFILES



## ORGANIZATION NAME

Pieces to Pathways

## PROGRAM NAME

Pieces to Pathways

## STEPPING UP THEMES

- Health & Wellness
- Diversity, Social Inclusion & Safety

## PROGRAM TARGET POPULATION

LGBTQQ2SIA / Racialized youth, ages 16 to 29 years old substance users

## PROGRAM ACTIVITIES

- Facilitate harm-reduction and abstinence focused substance use support services, which target the specific needs of queer and trans youth in Toronto
- Auditing and supporting capacity building for other organizations which serve substance users
- Bringing media attention to the current gap in services and advocating for services that culturally specific and developmentally appropriate to needs of queer and trans youth who use substances

**“Queer & Trans youth who have tried to access services have reported a disconnect between feeling safe and comfortable disclosing their identities, or to disclose their substance use depending on the context. Pieces to Pathways aims to fill these gaps by providing peer-led and peer driven support services which affirm the lived experiences and unique social needs of this population.”**

## CONNECT WITH PIECES TO PATHWAYS!

[www.piecestopathways.com](http://www.piecestopathways.com) // [@p2p\\_toronto](https://twitter.com/p2p_toronto)

**PIECES TO PATHWAYS (P2P)** is a peer-led initiative creating Canada’s first substance use support program for LGBTQQ2SIA youth ages 16 to 29 years old in Toronto.

## PROGRAM OVERVIEW

Currently, P2P is focusing its work in two areas: first, providing abstinence and harm-reduction alcohol and drug use support services for LGBTQQ2SIA youth which includes coordinating 3 community drop-in spaces, providing case management services and facilitating groups. Second, P2P is working with addiction and substance use service providers to determine their LGBTQ accessibility by engaging in a LGBTQ assessments and capacity building process.

## WHAT ARE YOUR EVALUATION HOPES AND DREAMS?

“What we mainly need the evaluation for is to evaluate the efficacy of our program. We conducted a needs-assessment before that looked at surveying service providers and focus groups. And what’s different now is focusing and having that evaluation to see how a program changes over a long-term basis. It would be super helpful to have that in place so that we know that what we’re doing is making things more accessible for our target population.”

## WHAT ARE OPPORTUNITIES FOR SUCCESSFUL EVALUATION?

“The skills and speciality that we have is that we are a queer-based organization and we know what population needs are, we know how to engage with them, they feel comfortable around us, and with something like YouthREX, we know that their speciality is evaluation, they know how to do things, they can make the right recommendations, and together we can collaborate and figure out what our steps should be.”

## HOW WILL YOUTH BE INVOLVED IN YOUR EVALUATION?

“We did have peer working groups, and know it’s very important for us. And I say peer-informed and peer-led, and sometimes people say it but don’t mean it. But we really mean it through all the processes. We’ll definitely be in for stuff like that for sure.”



# ROC Recreation Outreach Centre

CUSTOMIZED EVALUATION  
SUPPORTS (CES) PROFILES

EASTERN HUB



## ORGANIZATION NAME

ROC Recreation Outreach Centre

## PROGRAM NAME

clubROC

## STEPPING UP THEMES

- Health & Wellness
- Strong, Supportive Friends & Families
- Diversity, Social Inclusion & Safety

## PROGRAM TARGET POPULATION

All youth

## PROGRAM ACTIVITIES

- Providing recreation and sport opportunities
- Supporting the development of healthy relationships with peers and mentors
- Facilitating Book Club, Art Club, Sports Club and Food Club

**“I am incredibly struck with the way these kids genuinely want to be at the ROC and to learn this music and interact with volunteers. I think they really feel safe and loved and actually quite valued and empowered at the ROC.”**

- Sara Harris, clubROC volunteer



**THE RECREATION OUTREACH CENTRE’S (ROC)** mission is to provide opportunities, mentorship and programs that foster strong personal and social development for all children and youth in Prince Edward County.

## PROGRAM OVERVIEW

The purpose of clubROC is to provide all children, particularly those who experience marginalization, with extra curricular activities to improve their personal, social and physical development in a supervised, safe place. clubROC builds self-esteem, resiliency and confidence in participants with fun activities, enriching learning experiences and interaction with positive adult role models.

## WHAT ARE YOUR EVALUATION HOPES AND DREAMS?

“Our goal is to understand and measure the changes in the lives of a youth participant during participation in this program.”

## WHAT ARE OPPORTUNITIES FOR SUCCESSFUL EVALUATION?

“We get great testimonials from youth which the community really likes. We have a good relationship with the school which provides space for the clubROC program to occur twice a week.”

## HOW WILL YOUTH BE INVOLVED IN THIS EVALUATION?

“Youth are involved in evaluating the program through their repeat attendance and more formal feedback at the end of the program.”

## CONNECT WITH RECREATION OUTREACH CENTRE!

[www.theroc.ca](http://www.theroc.ca)

[facebook.com/theROC.believinginyouth/](https://facebook.com/theROC.believinginyouth/)

# ROC Recreation Outreach Centre

EASTERN HUB

CUSTOMIZED EVALUATION

SUPPORTS (CES) PROFILES



## ORGANIZATION NAME

ROC Recreation Outreach Centre

## PROGRAM NAME

Girls Group

## STEPPING UP THEMES

- Health & Wellness
- Strong, Supportive Friends & Families
- Civic Engagement & Youth Leadership

## PROGRAM TARGET POPULATION

All female students (including those who identify as female) in grades 9-12 at PECI

## PROGRAM ACTIVITIES

- Facilitating discussions on important issues facing girls today such as bullying, planning for the future, and encouraging participants to make healthier life choices.
- Offering weekly meetings that include complimentary lunch
- Planning off-campus activities
- Youth outreach

**“The Girls Group provides a safe space for sharing about the pressures girls face in this age group. Group discussions and 1-1 adult mentoring develops a bond between peers as they discover their similarities and become respectful of their differences.”**



**THE RECREATION OUTREACH CENTRE’S (ROC)** mission is to provide opportunities, mentorship and programs that foster strong personal and social development for all children and youth in Prince Edward County.

## PROGRAM OVERVIEW

The Girls Group (hosted at the local high school, PECEI) is dedicated to cultivating wellness and empowering teen girls to be all that they can be. The purpose of the Girls Group is to provide mentorship, with a positive, caring female adult who builds self-esteem and confidence, critical thinking skills, social connection and overall resiliency in participants.

## WHAT ARE YOUR EVALUATION HOPES AND DREAMS?

“Primarily to understand and measure the changes in the lives of the participants and be able to share that information with the community and even more so with the high school itself to support the need for the program to continue.”

## WHAT ARE OPPORTUNITIES FOR SUCCESSFUL EVALUATION?

“The majority of the girls who are attending the program we met in grade 7 or grade 8 through our girls-only in-school program, so there’s longevity in our relationships with them.”

## WHAT CHALLENGE MIGHT YOU EXPECT IN THIS EVALUATION?

“I feel confident that the informal context and approach to the program is impactful, however I think it’s a bit more challenging to evaluate, because there aren’t any direct, obvious outcomes that the community would see necessarily...So finding a way to highlight those things that are happening, even if they’re not in the obvious ways that people would think they would look.”

## CONNECT WITH RECREATION OUTREACH CENTRE!

[www.theroc.ca](http://www.theroc.ca)

[facebook.com/theROC.believinginyouth/](https://facebook.com/theROC.believinginyouth/)

# SALVATION ARMY COMMUNITY ALTERNATIVES FOR YOUTH - ELGIN

SOUTHWEST HUB

CUSTOMIZED EVALUATION

SUPPORTS (CES) PROFILES

## ORGANIZATION NAME

Salvation Army Community  
Alternatives for Youth - Elgin

## PROGRAM NAME

Create Your Skate

## STEPPING UP THEMES

- Education, Training & Apprenticeships
- Diversity, Social Inclusion & Safety

## PROGRAM TARGET POPULATION

- Youth in conflict with the law

## PROGRAM ACTIVITIES

- Outreach to youth
- Safety Awareness
- Team Building
- Developing Pro-Social Skills
- Cultivate Creativity
- Providing one-week skateboard building workshops to build practical skills

**“I have some clients that have been through the program, and one in particular when you talk to him, his passion is skateboarding and he’s had a rough go of things and to see him talk about it, he loves that board and uses it every day.”**

**THE SALVATION ARMY IN CANADA** provides direct, compassionate, hands-on service and restores hope and dignity to society’s most vulnerable. The **Community Alternatives for Youth Program in Elgin County** works with youth at risk to develop meaningful, timely and effective community based measures to support accountability, reintegration and justice in the community.



## PROGRAM OVERVIEW

The Create Your Skate program offers a one-week program for youth (aged 12-17) to learn woodworking and art skills through building their own skateboard. The purpose of the program is getting youth involved with pro-social activities, learning basic woodworking skills, building self-esteem and empowering the youth, helping them understand they can create things.



## WHAT ARE YOUR EVALUATION HOPES AND DREAMS?

“It would be nice to get something together about the program explaining why we do it, this is what we hope is happening...and how do we know what things that we need to add.” We also needed to develop a program plan and logic model to map out what the goals of the program are beyond making a skateboard.



## WHAT ARE OPPORTUNITIES FOR SUCCESSFUL EVALUATION?

“We want to measure if the self-esteem of the youth is increasing. Are they learning pro-social skills? Are they becoming more patient?” If we can understand these outcomes, our evaluation will be successful.



## HOW WILL YOUTH BE INVOLVED IN THE EVALUATION?

We wanted to have something other than a questionnaire. “I wonder if we could do something arts-based...If you got the big brown wallpaper and put it up for a week and then section it out into days and every day that they came in they could write a word or two and when they left they could write a word or two and at the end of the week you will have an evaluation for every single day.”

## CONNECT WITH THE SALVATION ARMY!

[www.cjslondon.ca](http://www.cjslondon.ca)

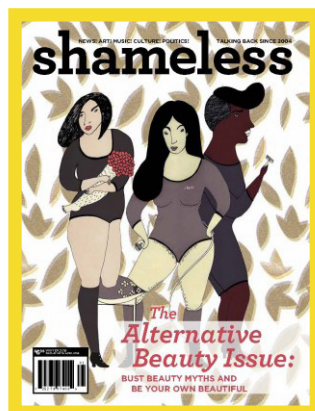
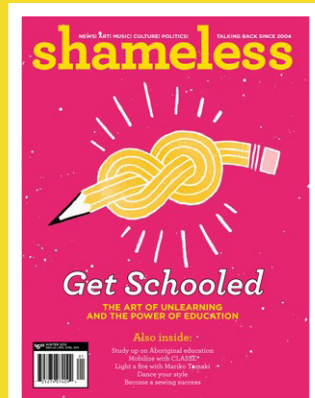


# Shameless Magazine

CENTRAL HUB // GREATER TORONTO AREA

CUSTOMIZED EVALUATION

SUPPORTS (CES) PROFILES



## ORGANIZATION NAME

Shameless Magazine

## STEPPING UP THEMES

- Diversity, Social Inclusion & Safety
- Coordinated & Youth-Friendly Communities

## PROGRAM TARGET POPULATION

- Youth living in poverty
- Racialized youth
- LBTTQ youth

## PROGRAM ACTIVITIES

- Publishing online and print magazine
- Facilitating youth advisory board

“Shameless strives to practice and develop an inclusive feminism”

## CONNECT WITH SHAMELESS MAGAZINE

[shamelessmagazine.com](http://shamelessmagazine.com) //

[@ShamelessMag](https://www.instagram.com/ShamelessMag)

**SHAMELESS** is an independent Canadian voice for smart, strong, sassy young women and trans youth. It’s a fresh alternative to typical teen magazines, packed with articles about arts, culture and current events, reflecting the neglected diversity of their readers’ interests and experiences. Grounded in principles of social justice and anti-oppression, Shameless aims to do more than just publish a magazine: they aim to inspire, inform, and advocate for young women and trans youth.



### WHAT ARE YOUR EVALUATION HOPES AND DREAMS?

“It’s been several years since we undertook a survey of our readers to learn more about who and where they are, and we’d love some support in designing a survey and reaching youth across Canada”



### ANY CONCERNS ABOUT UNDERTAKING AN EVALUATION?

“I think something that’s really important is something I find really frustrating about surveys. If there’s a scale and it’s not clear what 1 means and what 10 means. So if we do that, to make it clear.”



### HOW WILL YOUTH BE INVOLVED IN THE EVALUATION?

“The Youth Advisory Board we’ve just launched has 18 youth who are all Toronto based who will be advising us on the quality of the magazine. It would be great to have some guidance on what to ask them and how to work with that...and we’re paying the youth for their time so that they’re not just volunteers”

# Success Beyond Limits (SBL)

CENTRAL HUB // GREATER TORONTO AREA

CUSTOMIZED EVALUATION  
SUPPORTS (CES) PROFILES



## ORGANIZATION NAME

Success Beyond Limits (SBL)

## PROGRAM NAME

School Year Youth Space

## STEPPING UP THEMES

- Strong, Supportive Friends & Families
- Education, Training & Apprenticeships
- Diversity, Social Inclusion & Safety

## PROGRAM TARGET POPULATION

Racialized Youth  
Newcomer Youth  
Youth living in poverty

## PROGRAM ACTIVITIES

- Operating a youth space in Westview Centennial Secondary School where staff support youth during the school day, run an after-school program, and connect youth to an array of diverse opportunities
- Coordinating co-op placements, teacher meetings and conflict resolution
- Facilitating mentorship program
- Organizing exposure field trips

**“They’re always there for you when you need them, and they’re always pushing you to the best of your abilities.”**

- CORRIE, PARTICIPANT



## CONNECT WITH SUCCESS BEYOND LIMITS!

[www.successbl.com](http://www.successbl.com) // @SuccessBL

**SUCCESS BEYOND LIMITS’** vision is a collaborative, youth-led, community based movement that provides youth with holistic supports to complete their education and experience success in their lives. The organization’s vision is to improve educational outcomes, expand possibilities, and support youth in Jane and Finch along their individual paths to success.

## PROGRAM OVERVIEW

The program’s focus is to reduce the impact of external factors that negatively affect the educational success of youth in Jane-Finch. SBL operates a 6-week summer program that offers credits, mentorship, youth employment, enrichment, nutrition, engagement, graduation, and relationship building. The organization continues its support through its presence within Westview Centennial Secondary School, where it operates a youth space.

## WHAT ARE YOUR EVALUATION HOPES AND DREAMS?

“...I want it to be very intentional; we want to focus on our youth space itself. We’ve never really done research around what that means to the youth; it’s always kind of been overlooked but now we’re starting the community hub conversations and I think it’s really important for us to capture our youth space...”

## WHAT CHALLENGES HAVE YOU HAD WITH PAST EVALUATIONS?

“...(an evaluation in the past) didn’t capture what we needed to capture, in a sense, it was good to put on paper certain numbers, but I don’t feel like it really captured the impact and it didn’t really correlate any of the information, for instance we never measured the impact that mentorship had on educational engagement, rather we just measured mentorship and we measured educational engagement...so the structure was ok, but we didn’t really have the capacity or the know how to connect all of it together.”

## HOW WILL YOUTH BE INVOLVED IN THE EVALUATION?

“...I would love to get them involved. They’ve done work with us in terms of strategic planning and that type of evaluation...I don’t think they’ve done any work in terms of actually coming up with the evaluation, so I definitely want to see them get involved with that.”

# Techsdale Game Design Program

CENTRAL HUB // GREATER TORONTO AREA

CUSTOMIZED EVALUATION

SUPPORTS (CES) PROFILES



## ORGANIZATION NAME

Techsdale

## PROGRAM NAME

Game Design Program (Beginner)

## STEPPING UP THEMES

- Education, Training & Apprenticeships
- Diversity, Social Inclusion & Safety
- Employment & Entrepreneurship

## PROGRAM TARGET POPULATION

- Youth living in poverty
- Racialized youth
- Newcomer youth

## PROGRAM ACTIVITIES

- Youth Outreach
- Providing a 14-week tech course that meets once per week

**“I always wanted to be on the other side of the game, instead of just the person with the controller in my hand. I want to be the person designing the characters, the landscapes, putting the code in for the movements, the animation — everything.”**

— DANDRÉ HENRY, PARTICIPANT

## CONNECT WITH VISIONS OF TECHDALE!

<http://techsdale.ca> / @techsdale

**TECHSDALE (TXDL)** is a mentorship and development program, and its purpose is to teach young people how to make games, apps and websites. Techsdale was created not only to help youth express themselves through digital media, but to also to diversify the tech sector by steering young people of various backgrounds into employability and internships.



## PROGRAM OVERVIEW

The Game Design program teaches youth (14-19, with exceptions for exceptional students) vital tech skills using holistic project-based learning, mentorship and training to develop participant portfolios and create a pipeline into the tech industry for individuals with barriers to access.



## WHAT ARE YOUR EVALUATION HOPES AND DREAMS?

“I think we need to do better in terms of proving our legitimacy to potential funders. So anything to do with quantifying, or education and community impact...would add a good deal to our grant literature, our strategy, our way of thinking about how we develop curriculum and lesson plans. So that’s one possibility, one avenue for investigation.”



## WHAT OPPORTUNITIES FOR A SUCCESSFUL EVALUATION?

“As we begin to receive funding and to be empowered to offer additional programs, we will look for opportunities to a) advance the skills of returning students with intermediate programming, b) engage returning students as mentors to assist with first-time students. Successful evolution for TXDL at our present stage would mean quantifying worthwhile skill-deepening among our returning students.”



## WHAT KIND OF SUPPORT COULD YOU USE FOR THE EVALUATION?

“We have proposed to a couple of our students to get involved, to be youth representatives on the board, and at least a couple of them are enthusiastic about that, and we could move this in with that. A few of them are game to take on mentorship and leadership roles.”

# TIDES CANADA, THE CIRCLE

CUSTOMIZED EVALUATION

SUPPORTS (CES) PROFILES

NORTHWEST HUB



## ORGANIZATION NAME(S)

Tides Canada  
The Circle

## PROGRAM NAME

Ontario Indigenous Youth Partnership Project

## STEPPING UP THEMES

- Education, Training & Apprenticeships
- Employment & Entrepreneurship
- Civic Engagement & Youth Leadership

## PROGRAM TARGET POPULATION

Indigenous Youth

## PROGRAM ACTIVITIES

- Support Indigenous youth to feel empowered to explore, execute and where interested, scale their ideas through small grants (up to \$5,000) and capacity support (e.g. new partnerships, mentorship, skill building, etc.)
- Build stronger relationships between and amongst Indigenous youth and funders to support one another's work

**“The exciting thing about this project is the flexibility and how fluid the project is. It opens the doors so wide for indigenous youth in Ontario. Being from Ontario myself, the project really hits home knowing that it came from a source that is open and cares about the communities”**

— THEA BELANGER



## CONNECT WITH OIYPP!

[www.oiypp.weebly.com](http://www.oiypp.weebly.com) // [@ONIndigenous](https://twitter.com/ONIndigenous)

**TIDES CANADA** and **THE CIRCLE** jointly provide a platform for the Ontario Indigenous Youth Partnership Project. The partnership with the OIYPP builds on Tides Canada's efforts to develop regionally-tailored philanthropic models to support Indigenous communities in Canada.

The Circle on Philanthropy and Aboriginal Peoples in Canada is an open network to promote giving, sharing, and philanthropy in Aboriginal communities across the country. We connect with and support the empowerment of First Nations, Inuit and Métis nations, communities, and individuals in building a stronger, healthier future.



## PROGRAM OVERVIEW

OIYPP is a unique platform for Indigenous youth to explore and execute ideas. OIYPP provides access to small grants of up to \$5,000.

Uniquely designed to be a partnership rather than a traditional granting program, OIYPP's strengths are in its people and the relationships they hold. This allows it to serve as a connector, translator, networker, and partner between Indigenous youth and those interested in supporting them.



## WHAT ARE YOUR EVALUATION HOPES AND DREAMS?

“As we embark on our second year, we are still in the process of learning by doing and as a result, the work is constantly evolving and developing. We are keen to work towards a more robust evaluation framework so we can better understand the impact and value of the program.”



## ARE THERE ANY CONCERNS REGARDING EVALUATION??

“Our main concern is making sure that any evaluation framework we use is in keeping with the values of OIYPP and the Indigenous world view.”



## HOW WILL YOUTH BE INVOLVED IN YOUR EVALUATION?

“Youth will be sharing their perspectives on the value of their participation in OIYPP through a variety of ways including interviews and art projects. Both youth receiving support from OIYPP and our youth advisors will be part of the process.”

# Together We Flourish

SOUTHWESTERN HUB

CUSTOMIZED EVALUATION

SUPPORTS (CES) PROFILES



## ORGANIZATION NAME

Together We Flourish

## PROGRAM NAME

Breaking Barriers

## STEPPING UP THEMES

- Diversity, Social Inclusion & Safety
- Civic Engagement & Youth LEadership
- Coordinated & Youth-Friendly Communities

## PROGRAM TARGET POPULATION

Racialized Youth  
Newcomer Youth  
Youth living in poverty

## PROGRAM ACTIVITIES

- Outreach to youth
- Community mural sessions with artists
- Coordinating unveiling event (summer block party)

**"Our desire for social inclusiveness underlines all the work we do to bridge social gaps."**



**TOGETHER WE FLOURISH (TWF)** is a student/community organization that is oriented towards eliminating barriers to social inclusion and uses social work as a tool for community development.



## PROGRAM OVERVIEW

Breaking Barriers is a mural project that empowers youth (ages 16-24) living in Windsor to depict narratives that visualize and personify various oppressions that youth face including racism, classism, social isolation etc.



## WHAT ARE YOUR EVALUATION HOPES AND DREAMS?

"There are two things that we wanted to document; the personal and social impact on the youth participants, and the sense of community safety surrounding community garden. We hope to document these positive outcomes in order to strengthen our organizational capacity to apply further grants that will enable the implementation of our mandate."



## ARE THERE ANY CONCERNS YOU HAVE ABOUT THE EVALUATION PROCESS?

"(In past evaluations with youth)...the most difficult challenge in the evaluation process for youth was the acknowledgement of barriers they are facing in the presence of adults. The power relations between professionals and youth often prevents an honest evaluation process in the pursuit of maintaining a desired image."



## HOW MIGHT THE EVALUATION BE USEFUL TO OTHERS?

"Evaluation is a scientifically recognized tool to ascertain community relationships. We aimed to document the impact of youth artistic expression of their vulnerable narratives and its ability to stimulate community relationships. We hope decision makers can use the documented outcomes of our program to support similar artistic programming."

## CONNECT WITH TOGETHER WE FLOURISH!

[www.togetherwindsor.com](http://www.togetherwindsor.com) // [@twflourish](https://twitter.com/twflourish)





# UNITED WAY SUDBURY AND NIPISSING DISTRICTS

CUSTOMIZED EVALUATION  
SUPPORTS (CES) PROFILES

NORTHEAST HUB



## ORGANIZATION NAME

United Way Sudbury and Nipissing Districts

## PROGRAM NAME

Young Leaders on Board

## STEPPING UP THEMES

- Education, Training & Apprenticeships
- Civic Engagement & Youth Leadership

## PROGRAM TARGET POPULATION

- Youth living in rural and remote communities

## PROGRAM ACTIVITIES

- Offering training workshops
- Matching participants with organizations

**THE UNITED WAY'S** mission is to improve lives and build community by engaging individuals and mobilizing collective action. The organization supports the social service sector in communities through training, funding and partnership building.

## PROGRAM OVERVIEW

The purpose of the Young Leaders on Board Program is to enable young adults, aged 20-35, to serve on boards of directors of nonprofit organizations as interns. The program provides both this experiential component as well as in-class training.

## WHAT ARE YOUR EVALUATION HOPES AND DREAMS?

“We are seeking an independent study on the effectiveness of the program. We hope to use this evidence based material in order to market the program to other communities in our catchment area - Espanola, North Bay, Parry Sound and other small communities that have local boards.”

## WHAT ARE OPPORTUNITIES FOR SUCCESSFUL EVALUATION?

In the past, we have evaluated the success of the program based solely on the number of program graduates who go on to serve on boards of directors. However, we were not capturing other benefits to the participants, such as networking, leadership development and negotiation.

## HOW WILL YOUTH BE INVOLVED IN THE EVALUATION?

Youth will be given a pre and post survey to evaluate their progress. As well, the youth are open to focus groups, interviews, etc.

## CONNECT WITH UNITED WAY SUDBURY AND NIPISSING DISTRICTS!

[www.unitedwaysudbury.com](http://www.unitedwaysudbury.com) // [@UWSudNip](https://twitter.com/UWSudNip)

“We’re trying to involve young people, have their voices at the table.”



# Visions of Science Network for Learning

CENTRAL HUB // GREATER TORONTO AREA

CUSTOMIZED EVALUATION

SUPPORTS (CES) PROFILES



## ORGANIZATION NAME

Visions of Science Network for Learning

## PROGRAM NAME

Community Science Clubs

## STEPPING UP THEMES

- Education, Training & Apprenticeships
- Civic Engagement and Youth Leadership

## PROGRAM TARGET POPULATION

- Youth living in poverty
- Racialized youth
- Newcomer youth

## PROGRAM ACTIVITIES

- Weekly clubs (including themed workshops and guest speakers)
- In-school support
- Field trips
- Mentorships and Leadership

**“I really like the science club because I can do experiments hands-on and instead of just hearing about cool things in science, I can do them.”**

– THIRD YEAR SCIENCE CLUB PARTICIPANT



## CONNECT WITH VISIONS OF SCIENCE NETWORK FOR LEARNING!

[www.vosnl.org](http://www.vosnl.org) // [@visionsofsci](https://twitter.com/visionsofsci)

**VISIONS OF SCIENCE** is a not for profit organization that aims to advance the career aspirations and education achievements of youth from low-income and marginalized communities through meaningful Science, Technology, Engineering and Math (STEM) engagement.

## PROGRAM OVERVIEW

Community science clubs are held directly within communities where youth who are underrepresented in STEM live. Youth in grades 3 to 8 participate in weekly hands-on STEM experiments and workshops, attend field trips, and receive ongoing mentorship from volunteers. Currently, 200 youth are registered across 14 club locations in the Toronto and Peel region. The clubs are primarily funded through post-secondary partners, community housing providers, and donor sponsorship.

## WHAT ARE YOUR EVALUATION HOPES AND DREAMS?

“Based on our own evaluations over the years, youth in our programs cite increased academic achievement in science subjects, and an increased interest in science. We know that the effect of having consistent and caring adults and quality mentorship/teaching deepens our impact but we have not measured this and are not sure where to start. We would like evaluation support to create a framework for evaluation.”

## WHAT OPPORTUNITIES FOR A SUCCESSFUL EVALUATION?

“Although the organization has been incorporated since 2004, in 2011 the board was unofficially dissolved and the Executive Director at the time handed over operations... to a youth-led team! Given the transition, we are at a capacity building stage. We recognize that our programs are making a significant impact, however we want to further develop our evaluation.”

## WHAT KIND OF SUPPORT COULD YOU USE FOR THE EVALUATION?

“We want to refine our evaluation processes starting with a logic model. It would be really helpful to get support from outside of our organization since it can be difficult at times to be objective about our impact.”

# The Youth Action Network (YAN)

CENTRAL HUB // GREATER TORONTO AREA

CUSTOMIZED EVALUATION

SUPPORTS (CES) PROFILES



## ORGANIZATION NAME

Youth Action Network (YAN)

## PROGRAM NAME

Propeller

## STEPPING UP THEMES

- Education, Training & Apprenticeships
- Employment & Entrepreneurship
- Civic Engagement & Youth Leadership

## PROGRAM TARGET POPULATION

- All youth

## PROGRAM ACTIVITIES

- Outreach to youth
- Providing ongoing supports to youth to turn their socially conscious ideas into action through one-on-one guidance and coaching, connecting change-makers to resources including experts, funders, and peers, and building supportive networks of youth-led and youth-driven change-makers.

**“We believe in the ability of youth to affect change in the world and we understand the need for youth to have a stronger voice and greater participation in our local and global communities.”**

## CONNECT WITH THE YOUTH ACTION NETWORK!

[www.youthactionnetwork.org](http://www.youthactionnetwork.org)

@YAN\_Canada

**THE YOUTH ACTION NETWORK (YAN)** empowers youth and their allies to strengthen communities through education, mobilization and resource development. YAN is committed to pioneering meaningful leadership opportunities in the youth organizing space and offers services tailored to the needs of all community members, ranging from young people promoting social change to allies, educators and other leaders advancing the cause of youth empowerment.



### PROGRAM OVERVIEW

Propeller helps youth and their allies turn socially conscious ideas into action. Propeller is instrumental in incubating new and innovative ideas, in particular those that are born in and serve marginalized communities. Through Propeller, young people have the opportunity to meet other socially conscious peers; access information, tools, and resources for organizing; receive coaching and mentorship from experienced change-makers; and access funding through our charitable shared platform.



### WHAT ARE YOUR EVALUATION HOPES AND DREAMS?

“We have prepared a theory of change model and a logic model, but it may require some revision to reflect our work more accurately. Our main goal, however, is the development of an evaluation plan and data collection tools, both traditional and creative.”



### WHAT OPPORTUNITIES FOR A SUCCESSFUL EVALUATION?

“There was a piece about how are you going to share this with your stakeholders. So I thought maybe we would do some sort of monthly engagement meeting. But, we just don't know if it's going to get people into the space.”



### WHAT KIND OF SUPPORT COULD YOU USE FOR THE EVALUATION?

“...(to co-create a logic model) I could imagine doing something where we bring them (youth participants) all in, we get them to think about or articulate and share with each other ‘this is what we're trying to accomplish’...I think that would be a very fruitful conversation to have, it would also help us in terms of getting the groups to network. Because them hearing their own goals and approaches I think might actually create some connections there.”

# Youth Roots of Grey-Bruce

SOUTHWESTERN HUB

CUSTOMIZED EVALUATION

SUPPORTS (CES) PROFILES



## ORGANIZATION NAME

Youth Roots of Grey-Bruce

## PROGRAM NAME

IMPACT! Youth Summit

## STEPPING UP THEMES

- Civic Engagement & Youth Leadership
- Coordinated & Youth-Friendly Communities

## PROGRAM TARGET POPULATION

Youth living in rural and remote communities

## PROGRAM ACTIVITIES

- Recruiting speakers
- Organizing skill-building sessions (e.g. public speaking skills, fundraising skills, social media skills, how to be a natural helper for peers who are in need of help)
- Youth outreach

**"We believe that every youth should be safe, healthy and valued."**



## CONNECT WITH YOUTH ROOTS OF GREY-BRUCE!

[www.youthroots.ca](http://www.youthroots.ca)

[facebook.com/YouthRootsGB](https://facebook.com/YouthRootsGB)

**YOUTH ROOTS** is a team of community members and agencies from the Grey-Bruce region committed to ensuring the best possible life chances for all youth by supporting families, by building assets and by mobilizing community. They coordinate activities that encourage positive youth development and provide meaningful opportunities for youth. Youth Roots' vision is to help every youth in their community to be safe, healthy, valued and equipped with life skills.

## PROGRAM OVERVIEW

The IMPACT! Youth Summit brought together 200 youth from across Ontario to Hanover to provide leadership training and to create an awareness about mental health concerns that impact youth with the ultimate goal of increasing youth wellbeing across the province. Youth heard from motivational speaker Ryan Porter, Team Canada Inline Goalie and mental health advocate Kendra Fisher, and Me to We Co-Founder Craig Kielburger. The youth in attendance were challenged to think of how they could make a positive impact on their community, and Youth Roots is now supporting and monitoring the progress and outcomes of seven youth-led projects.

## WHAT ARE YOUR EVALUATION HOPES AND DREAMS?

"What we are hoping is that communities across Ontario see that youth have the ability to make an impact when motivated and empowered, and provided with the tools and support to create change. And we're trying to show that the collective power of these youth demonstrate that youth can make a difference and should be consulted in decision-making processes and policy development."

## WHO ELSE MIGHT BENEFIT FROM THIS EVALUATION?

"Youth Roots itself will be using the results to enhance future outreach programs in the region. The knowledge gained will also be shared with other youth organizations."

## HOW WILL YOUTH BE INVOLVED IN THIS EVALUATION?

"Youth must be involved in the evaluation process. Youth were critical in the planning process of the event from start to finish - evaluation included. A summer student was also hired to work between May and August in order to assist with the event and evaluation process."